



Sustainable Health Review

Sustainable Health Review Implementation Briefing

Leon McIvor, A/Assistant Director General, Department of Health

1 July 2019

Overview

- ❑ Sustainability must be our goal if we want future generations to enjoy the level of health care services provided today.
- ❑ The Sustainable Health Review (SHR) is not about cutting costs, it is about understanding how costs can be avoided, waste reduced and where investment will have the most impact on people's lives.
- ❑ Sustainability is not just financial, it includes improving safety and quality, and optimising clinical performance.
- ❑ The SHR report seeks to drive a cultural and behavioural shift, from a predominantly reactive, acute, hospital-based system, to a strong focus on prevention, equity, early child health, end of life, and access to services through technology and innovation.
- ❑ Problems cannot be solved by the health system alone; shifting the dial in health requires collaboration, leadership, courage and unwavering commitment to stay the course.

The Panel

- ❑ Ms Robyn Kruk AO (Independent Chair)
- ❑ Dr D J Russell-Weisz, Director General, Dept of Health
- ❑ Mr Michael Barnes, Under Treasurer
- ❑ Mr Warren Harding, Minister for Health Nominee
- ❑ Ms Pip Brennan, Consumer and Carer Nominee
- ❑ Dr Hannah Seymour, Clinical Nominee
- ❑ Ms Meredith Hammat, Employee Nominee

Consultation and Engagement

- ❑ Over the course of the SHR the Panel has engaged with hundreds of individuals and organisations.
- ❑ Held numerous targeted engagement events.



**Clinical
Reference Group**
(Monthly meetings)



**Consumer and
Carer Reference
Group**
(Monthly meetings)



The Case for Change

✓ Changing patient expectations

✓ Growth in demand and expenditure

✓ Commonwealth investment

✓ Health insurance

✓ Population health

✓ Partnerships

✓ Digital disruption

✓ Innovation

✓ New treatments

✓ Social Determinants of Health

✓ Value

✓ Transparency

Pillars to Sustainability



Interim Report

- ❑ SHR Interim Report was released in February 2018.
- ❑ 12 Directions, supported by 9 Recommendations for immediate action and 25 areas for further work.
- ❑ Recommendations:

- | | |
|---|---|
| <ol style="list-style-type: none">1. Develop/implement DoH leadership role to develop Whole of Government targets.2. Implement Emergency Telehealth Service Model Pilot.3. Develop/implement contemporary clinical needs-based model to enhance/replace current patient flow model.4. Review of MH clinical governance.5. Identify/report key quality, safety, financial, performance info for the system & hospitals | <ol style="list-style-type: none">6. Implement a WA health system-wide employee survey process and benchmark findings to inform and drive system-wide staff engagement programs.7. Develop/implement approach to sharing of patient data across public/private providers.8. Hasten process for recruitment and reduce agency costs (incl. implementation of streamlined recruitment process Pilot).9. Continue implementing financial sustainability measures. |
|---|---|

Final Report

- ❑ The SHR Final Report was released on 10 April 2019 and is a blueprint for the sustainability of the health system over the next 10 years.
- ❑ 8 Enduring Strategies, 30 Recommendations.



Enduring Strategies and Recommendations



Commit and collaborate to address major public health issue

Recommendations
1–5



Improve mental health outcomes

Recommendations
6–7



Great beginnings and a dignified end of life

Recommendations
8–9



Person-centred, equitable, seamless access

Recommendations
10–15



Drive safety, quality, and value through transparency, funding and planning

Recommendations
16–20



Invest in digital healthcare and use data wisely

Recommendations
21–22



Culture and workforce to support new models of care

Recommendations
23–27



Innovate for sustainability

Recommendations
28–29



Implementation

Recommendation
30

Strategies and Recommendations come as an interdependent package and do not lend themselves to cherry picking

Redefining Success

	1. Patient and carer experience		7. Obesity
	2. Staff engagement and culture		8. Safety and Quality / Clinical Performance
	3. Health equity outcomes		9. Care in right setting
	4. Improve mental health		10. Partnerships
	5. Child health		11. Workforce
	6. End of life		12. Financial / use of resources / value

Pilot Initiatives

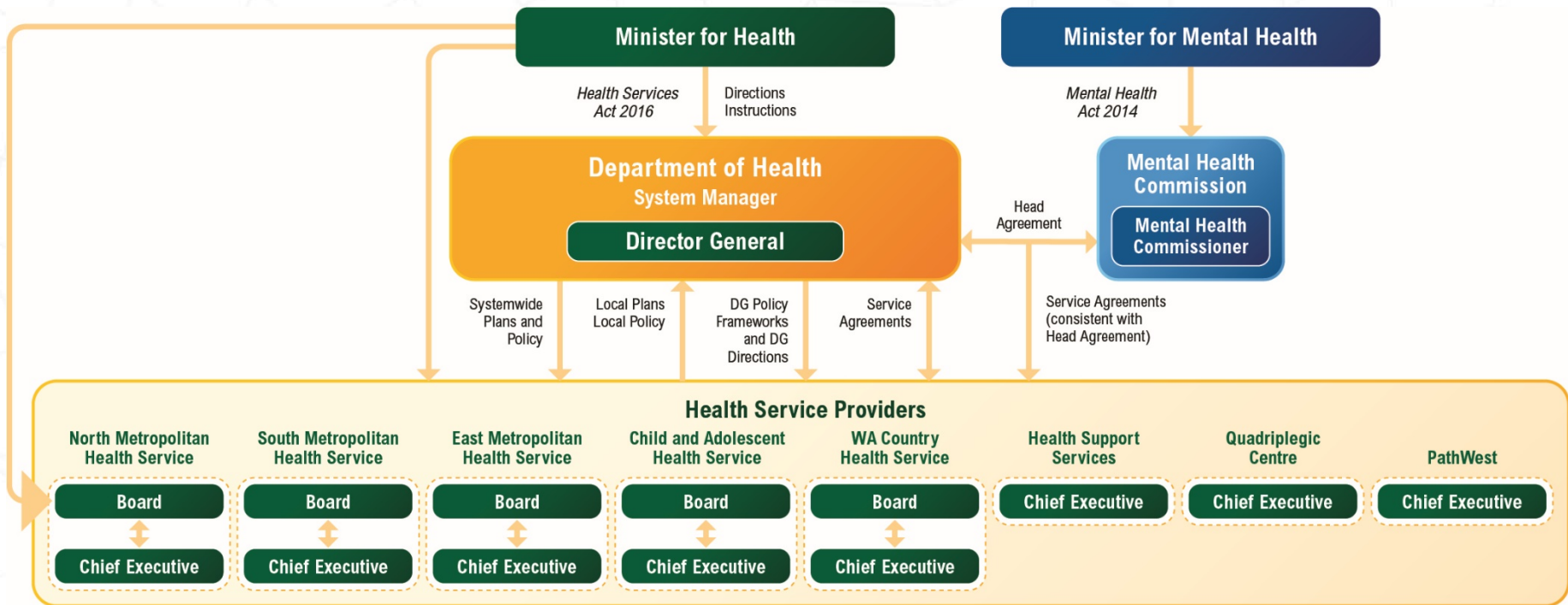
The Government has committed \$26.4 million towards implementation and initial projects

- 1 Mental Health Safe Haven Café
- 2 CAHS Co-Location Hub
- 3 Medical Respite Centre
- 4 Home First Model of Care
- 5 Planning for KEMH-QEII Co-Location
- 6 Mobilisation of the Sustainable Health Implementation Support Unit (SHISU)

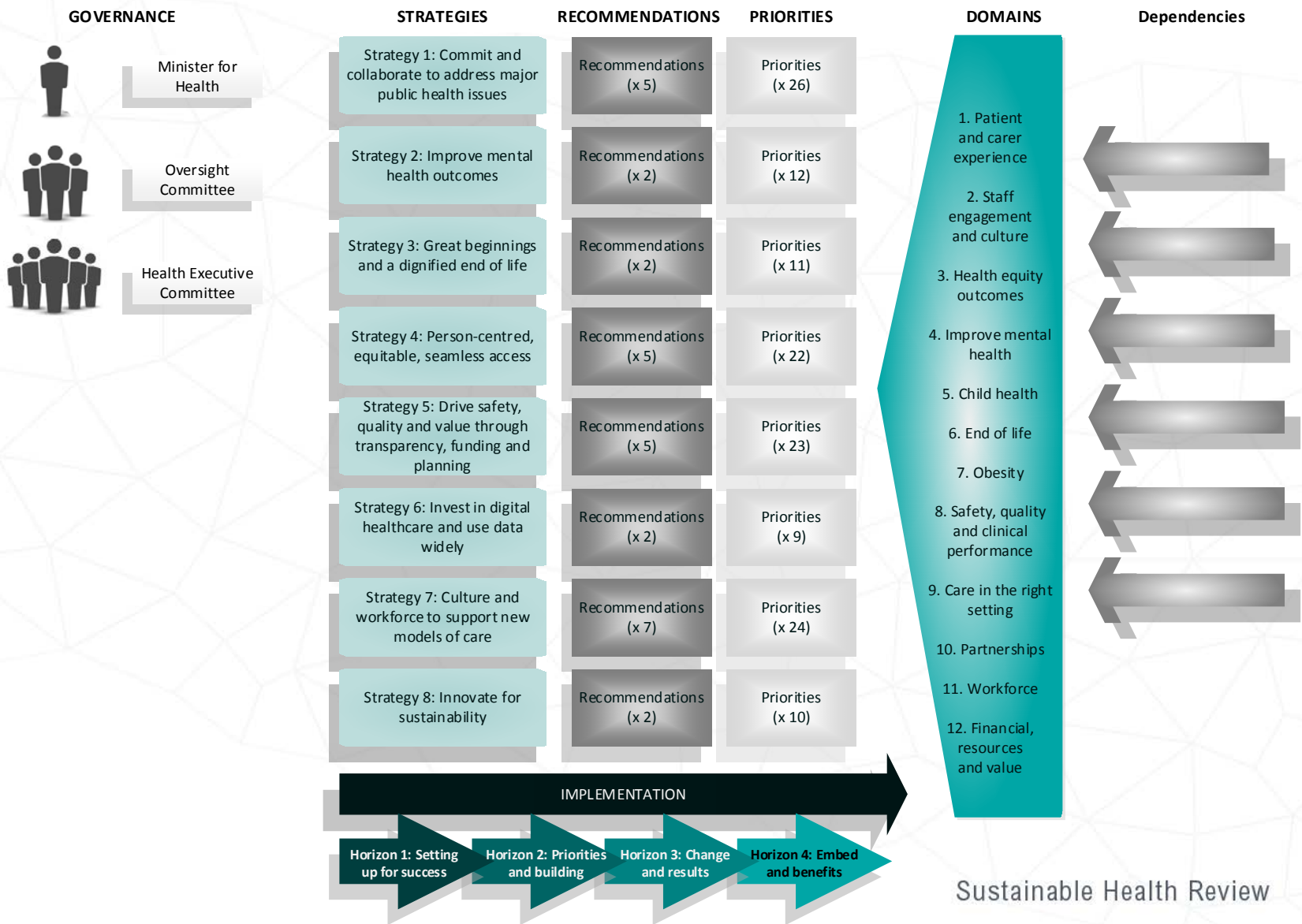
Implementation



Structure of the WA Health System

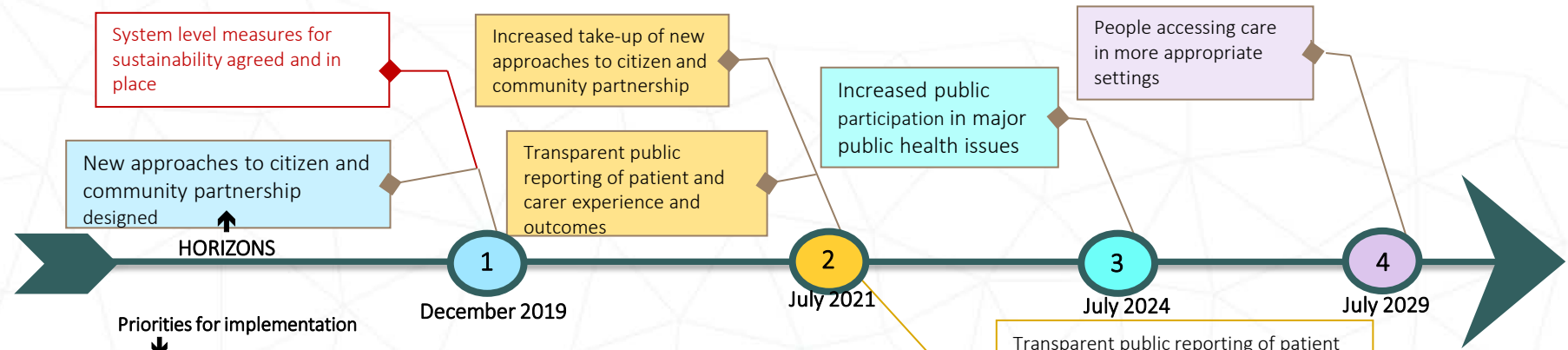


Mapping the SHR





Recommendation 4: *Citizen and community partnerships for delivery of sustainable health and social care services*



- All other priorities for implementation without specified dates:**
- Expansion of Patient Opinion, Care Opinion and real-time consumer feedback mechanisms; and introduction of deliberative approaches where citizens are engaged in a detailed review of a given topic to inform decision making.
 - Greater shared decision making between patients, carers and clinicians through open and honest conversations on treatment options, evidence, benefits and risks.
 - Consumer and carer voices embedded into health system governance structures and make consumer/carer/clinician partnerships and co-designed projects a normal part of business.
 - Introduction of community-based and online approaches to better link people to support and navigation assistance, including a pilot of Community Booths.
 - Engagement and support for carers embedded through early recognition in patient administration systems, and enhanced training to support and strengthen carer resilience and overall health and wellbeing.
 - System Measures for sustainability tracking progress of change – system level measures tracked from Horizon 2 to 4.

LEGEND

Horizon 1 Milestone	Horizon 2 Milestone	Horizon 3 Milestone	Horizon 4 Milestone	Program Wide Milestones	Priorities due in Horizon 1	Priorities due in Horizon 2	Priorities due in Horizon 3	Priorities due in Horizon 4
---------------------	---------------------	---------------------	---------------------	-------------------------	-----------------------------	-----------------------------	-----------------------------	-----------------------------

Implementation and Next Steps

- ❑ Overseen by an Ministerial Independent Oversight Committee led by Professor Hugo Mascie-Taylor.
- ❑ Health Executive Committee.
- ❑ Accountable lead, and co-leads finalised.
- ❑ Implementation supported by dedicated team in the Department.
- ❑ HSP local resources.
- ❑ Department of Health and Health Service Providers working together to consider future opportunities for collaboration with key partners.
- ❑ Leveraging existing governance arrangements.

Discussion & Questions



For more information and the full report visit:

health.wa.gov.au/sustainablehealthreview