



# Acknowledgement of Country



Source: Snapshots by Narelle Henry

We acknowledge that we are meeting on the traditional country of the Whadjuk people of the Noongar Nation and pay respect to Elders past, present and emerging. We acknowledge that they have occupied and cared for this country over countless generations and we celebrate their continuing contribution to the life of this region.



# Today we'll cover

---

- What is known about the plans for the new Women's and Babies Hospital
- Key consumer concerns and questions that we've heard
- Discussions we've had with WA Health and contact with the Minister's office
- Clinical perspectives on the plans – in relation to location of maternity, neonates and paediatrics
- What other questions do you have?
- Next steps



HEALTH CONSUMERS'  
COUNCIL



# About Health Consumers' Council

## Our Purpose

To increase the capacity of all people to influence the future direction of health care and to make informed choices

## Our Vision

Equitable, person-centred quality healthcare for all Western Australians



Individual Advocacy



Engagement



Systemic Advocacy





# What we know so far

---

- **11 April 2023 New location for Women and Babies Hospital to expand facilities**
  - Completion of the Business Case for the proposed Queen Elizabeth II (QEII) Medical Centre site found construction on the proposed QEII site posed **too many risks, extended timelines** and **unacceptable patient disruption**, the new site at FSH was identified.
  - ...providing expanded services for women and babies
  - Expansions to obstetrics and gynaecology services, birthing suites, and theatres in Perth's northern suburbs at Osborne Park Hospital
  - New Family Birthing Centre to be located alongside Osborne Park Hospital in addition to FBC at FSH
  - Perth Children's Hospital to be expanded with extra neonatal capacity
  - Building the hospital at the QEII site would have caused significant disruption to the neighbouring Sir Charles Gairdner Hospital, which would have resulted in patients and staff being impacted, higher build costs, and the hospital opening much later than planned due to the complex nature of the build.
  - The nearby Jandakot Airport also provides easier emergency access for regional patients needing to utilise services at the new Women and Babies Hospital.
  - Fiona Stanley Hospital currently delivers more than 3,000 babies a year and this new location allows the Government to provide a modern, leading edge maternity hospital next door to the State's largest tertiary hospital, without compromising on patient care throughout construction.
  - A key consideration of the co-location of the Women's and Babies Hospital with a tertiary hospital is to ensure that our sickest women have access to a state-of-the-art ICU. This makes FSH the obvious choice.
  - MfH: **"I am committed to getting this project right for women in WA and we will continue to consult with women to make sure we have the very best women centred health care and facilities."**



# What we know so far (cont)

---

- **Dec 2020 – “Surplus delivers a fully funded new Women and Babies Hospital”**
  - "The new Women and Babies Hospital will remain WA's only tertiary maternity and gynaecological hospital, a centre of excellence, available to all Western Australian families.
  - It will be a modern, state-of-the-art facility, located centrally in the QEII Medical Centre and will serve our whole State, no matter where you live in our suburbs or across regional WA.”
- **Jan 2022 – “Site confirmed as design starts on new women and babies hospital”**
  - “A key factor in the decision to build in the selected location is its advantage in future-proofing the QEII MC over a 40-year period, including future redevelopments of the Perth Children's Hospital, SCGH, PathWest and teaching and research facilities.
  - The selected site will afford greater opportunities to maximise natural lighting, access to views and potential for upper-level green spaces, while improving access to clinical services at both Sir Charles Gairdner Hospital (SCGH) and Perth Children's Hospital.
  - Aboriginal cultural advice received during the consultation confirmed that the proposed location was preferred.
  - **480 stakeholders consulted**
  - A cross-agency working group will be established to develop options for increased access to car-parking at the QEII MC site, for both the construction and operational phases of the project.
  - Concept design of the hospital will start in February 2022.



# What we know so far (cont)

---

- **Oct 2022 “Western Australians invited to help shape new women and babies hospital”**
  - “new \$1.8 billion world-class women and babies hospital expected to provide care for the next 100 years
  - Focus groups will commence in the coming months, aiming to provide input into the services and design on the new hospital”
  - MfH: “It is an absolute priority for me to ensure patient-centred care is at the heart of the new women and babies hospital... I want to ensure the voices of women and families are embedded in the planning process. This will help shape the design of the new hospital and the services it will offer. We will be consulting with the community throughout every stage of this project. We want to make sure we deliver a hospital that best meets the needs of the people who will be using its services.”
- **Dec 2022 “Consumer focus groups start for new Women and Babies Hospital”**
  - 766 applications through Expression of Interest process
  - 70 people selected – metro and rural



# Consumer consultation about new decision

---

- **April 2023**
  - HCC contacted conveying message that MfH is keen to ensure lots of consumer consultation
  - HCC reached out to consumer advocates to flag this
  - HCC approached Women's and Newborns Health Network
- **June**
  - Group of consumer advocates met to discuss if there'd been any contact
  - HCC followed up with WA Health and wrote to MfH
  - HCC met with CEO of North Metro Health Service
- **July**
  - Community conversation (today!)
  - Further discussions with WA Health (planned)

# Equity

## Agenda setting

- Leaders on Boards
- Leaders at Executive – HSP and DoH

## Service improvement

- As partners in quality improvement activities
- When deciding what data is important to collect

Championing a range of consumer/community roles

## Governance and monitoring

- Lived experience experts reviewing key indicators – i.e. S&Q data
- Lived experience experts inputting to how data is collected

## Service users

- Providing in the moment feedback about experience
- Focus groups to inform future planning

# Diversity

Training

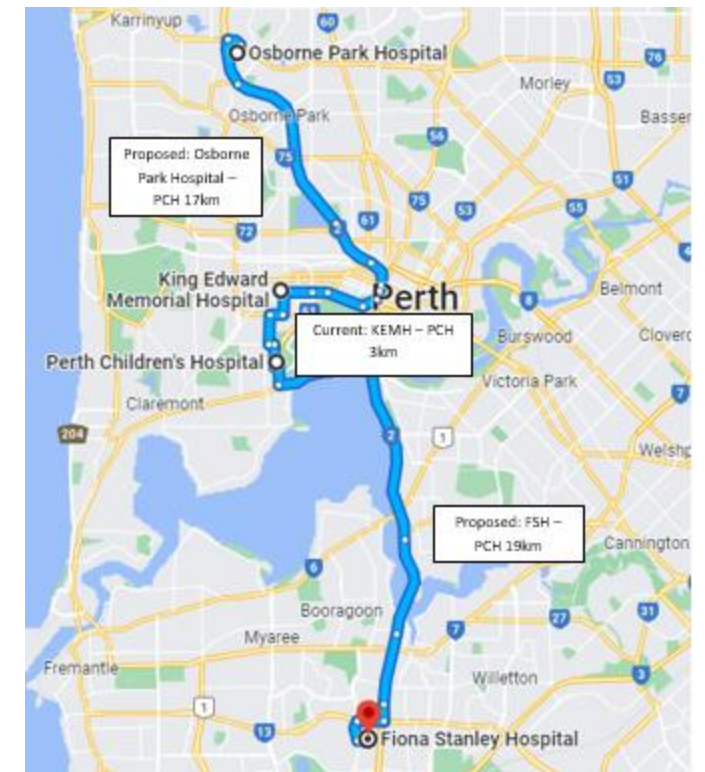
Support



# Consumer questions and concerns

---

- The distance between FSH and PCH represents a significant risk to some pre-term babies and their mothers
- Extremely pre-term babies cannot be cared for at Fiona Stanley Hospital because the maternity unit is small and there is lack of expertise in preterm births, especially highly pre-term births
- Lack of availability of limited number of specialists in WA who work with extremely pre-term babies and distance from FSH
- Concern about no access to Maternity Group Practice at FSH, which is focused on maternal health and welfare of people giving birth;
- Neonatal Transport Service is not an adequate service for very sick, pre-term babies who need surgery immediately after birth, and who cannot travel to other locations to access care and treatment
- Lack of clarity about the implications for other services that operate out of KEMH – including the Sexual Assault Resource Centre, the Maternal Assessment Unit, and the Mother and Baby Unit
- Lack of clarity about whether there will be a maternity ICU in the new hospital.



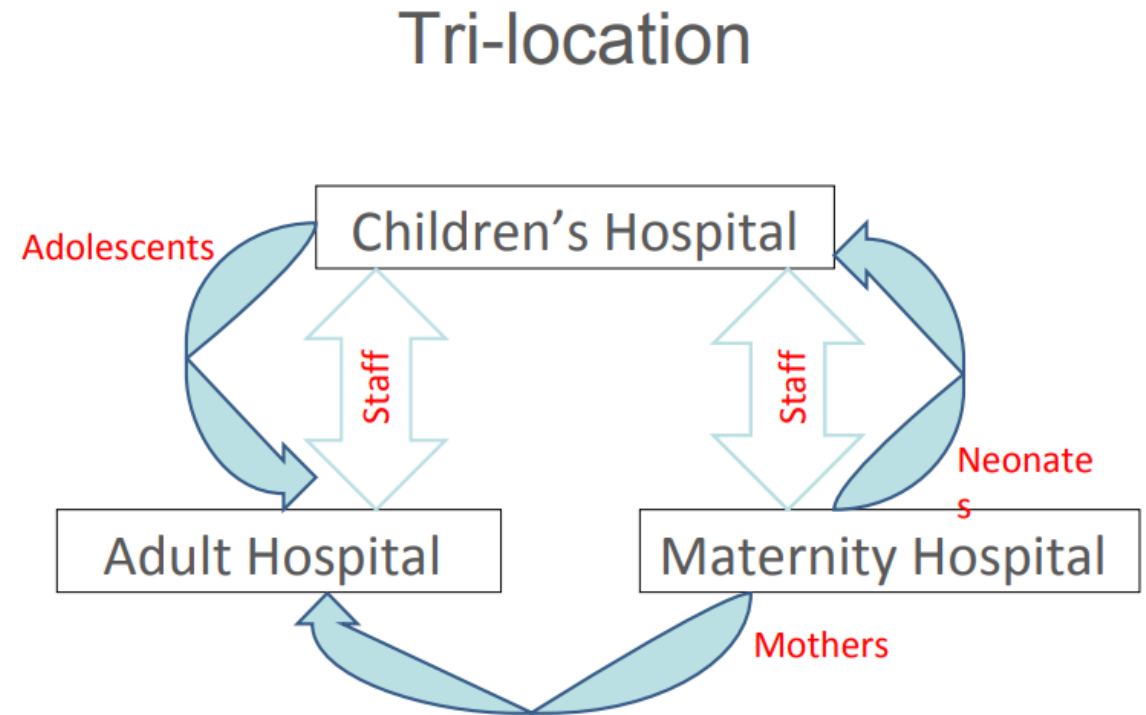
# Clinical perspectives

---

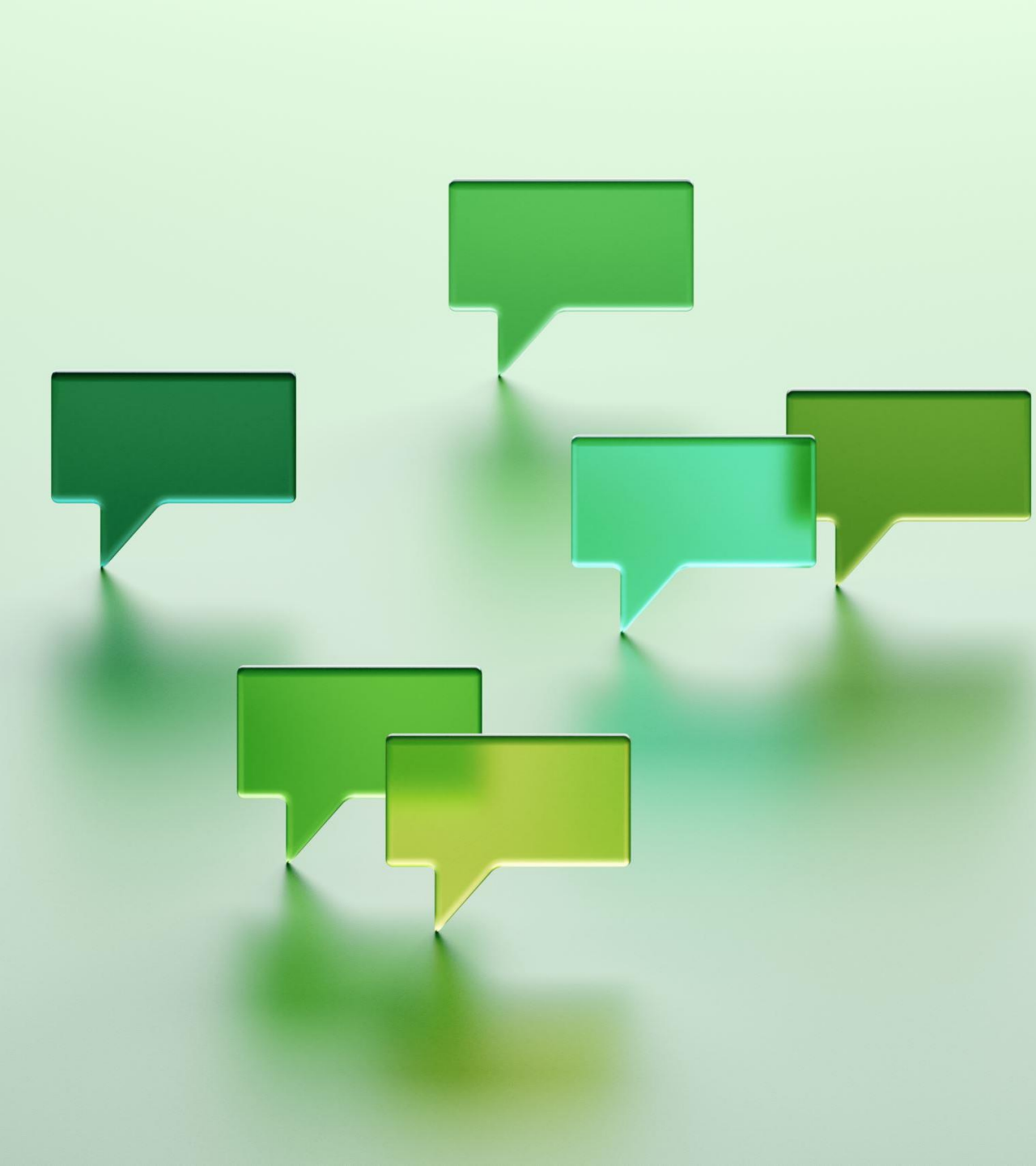
- “Tri-location of paediatric, adult and maternity services has benefits for infants, children, young people and adults. This is because of the breadth and depth of specialties and sub-specialties exist on a campus to treat complex conditions.”

[Children's Hospital Ireland, accessed July 2023](#)

- Consultations have taken place with clinicians at various WA Health sites



[From Eilish Hardiman CEO Irish National Paediatric Hospital Development Board, 2011](#)



Let's talk

---



# Contact us

---

- Health Consumers' Council WA
  - [www.hconc.org.au](http://www.hconc.org.au)
  - [info@hconc.org.au](mailto:info@hconc.org.au)
  - <https://www.facebook.com/hconcwa/>
  - Tel: 08 9221 3422
- Clare Mullen, Executive Director
  - [Clare.mullen@hconc.org.au](mailto:Clare.mullen@hconc.org.au)
  - <https://www.linkedin.com/in/claremullen/>
- Jasmina Brancovich, Policy and Systemic Advocacy Lead
  - [Jasmina.brancovich@hconc.org.au](mailto:Jasmina.brancovich@hconc.org.au)
- HCC monthly e-news
- HCC can advertise consumer/community involvement opportunities
- HCC on social media
  - HCC Facebook page (~2600 followers)  
<https://www.facebook.com/hconcwa/>
  - HCC Maternity group
  - <https://www.facebook.com/groups/WAMaternity>
  - LinkedIn  
<https://www.linkedin.com/company/health-consumers'-council/>